

Willingboro Art Alliance

Sketchbook November 2015

Topic	Page
What's New.....	1
NJPPS Meeting.....	1
November Program.....	2
Monthly Meetings.....	3
Mark Your Calendar.....	3
Members' News.....	4
President's Message.....	4
Opp-ART-unities.....	4-5
Shows to See.....	5-7
Workshops.....	7
WAA Officers.....	8

What's New.....

- **WAA Monthly Meeting will be held November 18, 2015, due to closure on November 11, 2015.**
- **The Holiday Luncheon at Carlucci's on the Waterfront will be Saturday, December 5 from 11:30 am to 3 pm. Register by November 23, 2015.**
- **We have prepared the slate of officers for 2016. But if you interested in running, please contact Donna Fascenda.**

New Jersey Pastel Painters Society (NJPPS) Meeting

**Wednesday, November 4 at 1:00 pm
at the JFK Center**

Featured Presenter

**November presenter
Richard Yeager
Pastoral Nudes**

Richard will demonstrate how to create a pastoral nude beginning from the blocking form to completion.



The oldest art organization in Burlington County
Founded 1964 – Incorporated 1965
501(c)(3) Non-Profit Organization
Facebook: Willingboro Art Alliance
Website: www.willingboroart.org
Email: info@willingboroart.org

November Program

Richard Yeager

Demonstrating on Pastoral Nudes



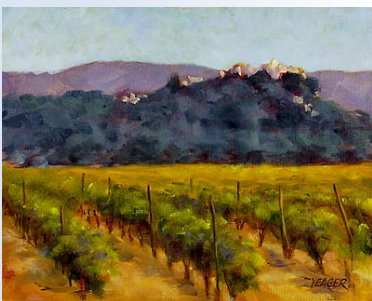
Farm on Union Mill Road



Lobsterman's House



Beaver Creek Autumn



Menerbes

Building on a successful career as an art director, graphic designer, photographer and head of his own advertising agency, Richard Yeager has applied his talents to painting and pictorial photography. He is equally at home with brush or camera and sees each merely as tools for creative expression.

His paintings are traditional in approach, whether landscape or figurative, with an emphasis on capturing the quality of light and essence of the subject. They exhibit a strong underlying sense of composition and superb draftsmanship.

He studied drawing, painting, photography and graphic design at the Philadelphia College of Art (now the University of the Arts) and was an instructor there for many years. He has taken subsequent courses at The Pennsylvania Academy of the Fine Arts and workshops with Ed Whitney, Burt Silverman and Don Stone.

In his advertising career, he has received many awards for his creativity. These awards include two Clios for television commercials, Gold and Silver awards from the New York Art Directors Club and the Philadelphia Art Directors Club, the Hollywood Advertising Club, Gold awards from the American Advertising Federation, including Best of Show.

Before founding his own firm in 1968, Mr. Yeager had been an art director at N. W. Ayer, an internationally acclaimed advertising agency. There he was responsible for national campaigns for AT&T, DuPont, General Electric, Sealtest, Dole Pineapple, Corning Ware, Hamilton Watch and Whitman's Chocolates.

Mr. Yeager now divides his time between homes in Kennebunkport, Maine and Moorestown, New Jersey, with studios in both locations.

Mark Your Calendar

Wednesday, November 4
NJPPS Monthly
Members Meeting
1 to 4 pm

Wednesday, November 18
WAA Monthly
Board Meeting
4 to 5 pm

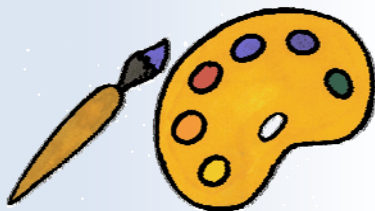
Wednesday, November 18
WAA Monthly
Members Meeting
5:30 to 7:30 pm

Sunday, November 8
Philustration Exhibition
Philadelphia Sketch Club
Reception 2 to 4 pm

Thursday, November 12
*Annual Juried
Photography Exhibit*
Center for the Arts
Reception 7 to 9 pm

Friday, November 13
Small Works
Perkins Center
Collingswood
Reception 6 to 9 pm

Saturday, November 14
David Watson
*Depictions of Strength
and Struggle in History
and Literature*
Church St. Art & Craft
Reception 4 to 6 pm



November 18 Members' Meeting

Room 300 at the JFK Recreation Center
Levitt Parkway & 429 JF Kennedy Way, Willingboro

Wednesday, November 18, 5:30 pm
Presenter: Richard Yeager



**EXECUTIVE BOARD MEETING WILL BE
WEDNESDAY, NOVEMBER 18 - 4 TO 5 PM
ROOM 300 AT THE KENNEDY CENTER**

**ALL WORKSHOPS WILL BE HELD
IN ROOM 300 OR 301 WORKSHOPS**
(all levels welcome)

9AM, Wednesdays, Room 301, Kennedy Center

November 4	Instruction and hands-on with colored pencils, presented by RJ Haas
November 11	Closed for Holiday – No Class
November 18	Colored Pencil Continued with RJ Haas
November 25	Critique

Most Wednesday workshop sessions are planned with a specific medium or technique to explore, but you are welcome to just come and paint. Materials and paints are supplied in many of the classes. A \$1.00 donation is requested from all participants in the workshop to help in purchasing art supplies. To check out one of the many books or videos from our library, see our librarians, Bill Devine or Rene Yohannan.

New Jersey Pastel Painters Society (NJPPS) is the first Wednesday of the month from 1 to 4 pm.

For more information contact Peg Gryger
at pbgryger@gmail.com or call (609) 864-4029.

Life Classes are \$72 for eight sessions

Life Classes are held each Monday from 10 am to 1 pm
Contact Marcia Steinbock for information at marcia@ucountonus.com.

Costume Classes (WAA COS) \$72 for eight sessions

WAA COS - working with your choice of mediums and styles. Meet on Thursdays at 10 am until 1 pm. Each week there is a costumed model to work from.

For more information contact Denise McDaniel at dmmmmcwaa@gmail.com.

Thursday Night Model Classes are \$10 per session

Life/costumed Classes are on Thursdays from 6:15 to 8:45 pm
Contact Michael Leathem for information at tmleathem@gmail.com.

Costume Classes (WAA COS) \$72 for eight sessions

WAA COS is a group of artists who meet weekly working with their choice of mediums and styles.
Meet on Thursdays at 10 am until 1 pm.

Each week there is a costumed model to work from. For more information contact
Denise McDaniel at dmmmmcwaa@gmail.com.

President's Message *November 2015*

I am currently urging the Board to take a hard look as to how we do business and how to improve. The Board, rather than I, have driven the conversation, reviewing and considering many aspects of possible changes. Items such as how to provide more activities, classes and workshops, while keeping cost down? The last thing the Board wants to do is add any additional cost to the members. Providing additional activities will cost so where do we find the monies? One of the fundamental questions: how do we get a better turn out by the membership?

So this is where you, the members, can help. We appreciate any comments you may have as to what would improve your membership in the WAA. Join the conversation by calling me or adding your thoughts by email. We are looking for comments before December so that we might be able to implement them in the New Year.

So your comments are urgently requested!

Best wishes,

RJ Haas

WAA President

Member News

- The following WAA members were accepted into the Medford Art Center Annual Show: **Arlene Arons, Susan Barnes, Ellen Barnett, Marlene Craig, RJ Haas, Linda Hibbs, Joy Hoffman, Kathy Kellagher, Dominic Martelli, Joyce McAfee, Richard Montemurro, Ginny Ogden, Sharon Paisner, Carol Hess Plimpton, Irvane Spracklin, Athanasia Ward, and Edward Ward.** Show runs until November 22, 2015.
- **Ben Cohen** received the Third Place Award in the St. Stephen's Spirituality in Art Exhibit at the St. Stephens Episcopal Church in Beverly, NJ.
- **Richard Montemurro** has three digital images in the MAC Annual Fine Art Show and one piece in the Cherry Hill Annual Juried Photography Exhibit. He participated in the NJ State Senior Citizens' Annual Juried Art Show. Richard also has three photographs in the Center for the Arts' Around the World Members' Exhibit, and in the St. Stephen's Annual Art Exhibit.
- **Norm Gaffin** has works in the Center for the Arts Exhibit, and two works in the WAA Annual Show where he won Best in Show.
- **David Watson** will be displaying his Depictions of Strength and Struggle in History and Literature at Church Street Art and Craft in the month of November.

Opp-art-unities

- **Church St. Art & Craft** Call for Entries into its 1st Annual Small Works Show. Delivery of artwork is November 20 to November 22 from 12 to 4 pm. Artworks may not exceed 12" in any direction, including the frame. The show will run from November 27, 2015 to January 3, 2016; and the reception will be December 12 from 4 to 6 pm. Fifty percent of all proceeds will be donated to the Food Bank of South Jersey.
- **About The Art** in Mount Holly, curated by Jan Terry, will be inviting artists to show their work in 60 to 90 day intervals. The Gallery Space is located within the office condominiums at 137 High Street. Please contact Jan Terry for further information about exhibit opportunities at 609 280-6890.

WAA 20th Annual Show Winners

Best of Show

Norman Gaffin - Quintet



First Place

Linda Hibbs - *Storm Cloud*

Second Place

Kathy Kellagher - *Curtin's Marina*

Third Place

Arleen Potter - *Pompeii Friend*

Fourth Place

Gwynn DiPilla - *Burano*

Fifth Place

Edward Ward - *Foggy Drive*

Mary Lou Reeves Memorial Award for Abstract Expression

Arlene Arons - *A on Blue*

Carmen Altopiedi Memorial Award For Traditional Fine Art

Anthony Cirineo - *Mum's the
Word*

Watercolor Award

Lois Lohse - *Canyon*

Honorable Mention Award

Irvane Spracklin - *Mystery of
Mangrove Trees*

Opp-art-unities (continued)

- **Philadelphia Sketch Club** 2015 PSC Legacy Art Sales Exhibition, a non-juried online exhibition open to PSC member participants. Delivery is from December 4 and December 5 from 1 to 5 pm. The exhibit will run from December 4 to December 19, 2015.

Shows to See

- **Center for the Arts** Annual Open Juried Photography Exhibition will be on display from November 2 to 23, 2015. All processes of photography will be displayed by artists from the Delaware Valley. Prizes are awarded at the opening reception Thursday, November 12 from 7 to 9 pm.
- **Medford Arts Center** 2015 Annual Fine Art Juried Art Exhibition runs through November 22, 2015. In the Gazebo Room-photography of Bonnie Rovere and Doreen Rutherford exhibit continues through November 22, 2015.
- **Markeim Arts Center** is pleased to present the 7th Annual Fall Juried Exhibition, *Fall Reflections: Inspired by the Season*. In this juried exhibition the gallery will come alive with art inspired by the season. Fall is a season for balancing light and dark, works will be of various mediums and will interpret light or reflectivity while embracing the feelings, scenes, moods and images of autumn. The exhibit runs from November 3 to November 29, 2015.
- **Church St. Art & Craft** will be displaying David Watson's *Depictions of Strength and Struggle in History and Literature* in the month of November. The artwork on display will be a series detailing the strength and resilience of humanity through literature and historical events. Reception will be November 14 from 4 to 6 pm.

David Watson Presents
*Depictions of Strength and Struggle in History and
Literature*



November 1st to November 25th

The Reception is November 14th, from 4-6 PM

The artwork on display will be a series detailing the strength and resilience of humanity through literature and historical events. Be sure to stop by!

Church Street Art and Craft, Mt. Holly, NJ.
2 Church St. - 609-261-8634

- **Philadelphia Sketch Club** presents its 7th Annual Philustration Exhibition; a juried exhibit that will be on display from November 2 to 27, 2015. The opening reception will be Sunday, November 8 from 2 to 4 pm.
- **Perkins Center for the Arts Moorestown** presents *Creative Tension* through December 6, 2015. *Creative Tension* explores the artist's vision and the self-motivation and disciplined behavior needed to achieve that vision.



WAA 20th Annual Show Winners (continued)

Achievement Awards
Sharon Paisner - Orange
Flourish

Patrick Barry - Zion 15

David Watson - Buddy Guy

Jessica Phelps - Out of the
Wake

Ben Cohen - Reading, Riting &
Rithmetic

Dominic Martelli - Water Lilies
on the Mullica River

Willingboro Kennedy Building Closures for 2015

Wednesday, November 11
Veteran's day

Thursday-Friday,
November 26 to 27
Thanksgiving

Friday, December 25
Christmas

Inclement weather
information to see if the
building is closed, please
call 609 877-2200
extension 1116 and a live
person will answer.



Like Us on
Facebook at
Willingboro
Art Alliance

Shows to See (continued)

- **Perkins Center for the Arts Collingswood** features Small Works, the work of regional arts in jewelry, painting, ceramics, fiber and more. The exhibit runs from November 13 to December 12, 2015; and the Artists' Reception is November 13 from 6 to 9 pm.
- **Burlington County Lyceum of History and Natural Sciences** presents Burlington County: Rooted in Agriculture. The exhibit will be on display until December 31. From the earliest crops cultivated by Native Americans, through the ups and downs of commercial farming, to the local food movement of today, the exhibit traces the rich history of agriculture in Burlington County. 307 High Street, Mt. Holly, NJ 08060.
- **The Gallery at Lower Bucks Campus** presents Call of the Wild. The theme of this exhibition will focus on all species of animals, and will be on display through November 20, 2015.
- **Rowan College of Burlington County (formerly Burlington County College) Student Art Gallery** will be exhibiting *Drawn to Darkness* until November 6, 2015. 1 High Street, Mt. Holly, NJ 08060.
- **ABstract EXpressions Contemporary Art Gallery** is located at 70 High Street in Mount Holly, New Jersey. Gallery hours are Friday from 1 to 7 pm and Saturday from noon until 7 pm, and by appointment. Contact the Gallery at 609-267-7513, by email at ABstractEXpressionsGallery@comcast.net.
- **Church St. Art & Craft** (formerly Home Fine Art Gallery) located at 2 Church Street, Mount Holly, NJ presents All Hallows Eve until November 1, 2015. The Halloween/Fall themed show features the work of local New Jersey and Philadelphia artists.
- **West Windsor Art Center** presents Photo-Transformation, an exhibit of photographs that have been transformed in some way. The finished artwork may include original photos that have been hand-painted, collaged, overlaid with other media, or otherwise transformed. The exhibit runs through Saturday, November 7, 2015.
- **About the Art Gallery Space** at the Burlington County Bar Association offices: 137 High Street, Mount Holly. Second Saturdays on November 14 and December 12, 2015.
- **New Jersey Water Color Society** will be having their 73rd Annual Open Juried Exhibition at the Middletown Arts Center. The exhibit will be on display through November 1 at 36 Church Street, Middletown, NJ 07748.

**Join us for our
Holiday Luncheon at
Carlucci's on the
Waterfront**

876 Centerton Road
Mount Laurel, NJ 08054

Saturday

December 5, 2015

11:30 am to 3 pm

Cost: \$15 for members; \$25
for member and spouse
(Cash Bar)

Please make check payable
to "WAA"

Mail reservation form
and check to:

Donna Fascenda
120 Burrs Mill Road
Southampton, NJ 08088

**Pre- registration is
required**

**Deadline: November 23
NO REFUNDS AFTER
November 27**

Questions?

Call: (609) 859-0607

Please email or call our
editor with art news for the
December Sketchbook
by November 18 to
jessica_kane@outlook.com
or call (609) 859-0607 and
leave a voice message

Shows to See (continued)

- **Gallery Seventy-Two** is an art gallery in the heart of downtown Mount Holly, NJ that offers opportunity for photographers to showcase their work located at 72 High Street, Mt. Holly, NJ 08060.
- **The Pine Barons Chorus** Free concert is on Saturday; November 7, 2015 at St. Andrews First United Methodist Church, Rt. 70 next to Ponzio's.

Workshops

- **Church St. Art & Craft** will be hosting a Sketch Club every Third Thursday from 6:15 to 9 pm. 2 Church Street, Mount Holly, NJ 08060.
- **The South Jersey Camera Club** meets the third Tuesday of every month. Medford Leas Community Center, Medford, NJ 08055.
- **Evening Art Class**, a life figure and portrait class will begin at 6:15 pm Thursday evening, November 5 in Room 300 at the Kennedy Center in Willingboro. Each session will cost participants \$10.00 and run to 8:45 pm. The November 5th session will be a mature male portrait. Artists will be free to use any media and will be without lecture or individual instruction.
- **RJ Haas** at Church St. Art & Craft has I Paint, You Paint lessons every other Saturday from November 7 until December 19. Acrylic Painting from 9:30 until 11:30 and Charcoal Drawing from 12 until 2. Also an open workshop every Tuesday night from 6 to 8 pm – you bring your material and he will assist you.
- **Maureen Gass-Brown** at Church St. Art & Craft will be having a mini-series of workshops every other Saturday. She will explore the many facets and possibilities of the exciting, magical medium of watercolor, as well as many basic fundamentals such as color, shape, value, composition and basic drawing skills. (**November 14 and November 28** - Incorporating Pen & Ink on Your Watercolors, **December 12** and December 26- Creating Dominance & Impact in Your Painting (through color, value, shape, size, line & direction))

2016 Election

Those currently on the slate are:

President RJ Haas

Vice President & Exhibition Chair Joy Hoffman

Secretary Gustavia Tirado

Treasurer Patricia Watson

*If you want to run for office, please submit your name to Donna Fascenda
dfascenda@comcast.net and you will be added to the slate.*

**If you do not want to run for office but want to help out, you can also
become a Member at Large. The Vice President could always use
additional support/help*

WAA OFFICERS - 2015

President	RJ Haas
Vice President & Exhibition Chair	Joy Hoffman
Secretary	Gustavia Tirado
Treasurer	Patricia Watson
Past President	Donna Fascenda
Member at Large	Peggy Gryger David Watson

WAA CHAIRPERSONS

Membership	Margaret Mary Vail
Programming	RJ Haas
Art Education	Ben Cohen
Public Relations/Publicity	Carolyn Burke

WAA COORDINATORS

Monday Life Class	Marcia Steinbock
Tuesday Open Studio	Arleen Potter
Wednesday Workshop	Ben Cohen
	Fran Morrison
	Athanasia Ward
Wednesday NJPPS	Peggy Gryger
Thursday Open Studio	Myra Ryan
Thursday Costume	Denise McDaniel
Thursday Night Class	Michael Leathem
Sketchbook Editor	Jessica Kane
Order Art Supplies	William Ruspantine
Hospitality	Patricia Watson
Sunshine	Athanasia Ward
Library	Bill Devine
	Rene Yohannan
Historian	Athanasia Ward

If you have news, call Donna Fascenda at (609) 859-0607 or email Jessica Kane at jessica_kane@outlook.com.